



Fisheries and Oceans
Canada

Pêches et Océans
Canada

Canadian
Coast Guard

Garde côtière
canadienne

Notices to Mariners

Edition No. 09/2025
September 26, 2025



Safety First, Service Always

Monthly Eastern Edition

Canada 

Notices to Mariners – Monthly Eastern Edition
Edition No. 09/2025

Aussi disponible en français :
Avis aux navigateurs – Édition mensuelle de l'Est
Édition n° 09/2025

Published under the Authority of:

Canadian Coast Guard Programs
Aids to Navigation and Waterways
Fisheries and Oceans Canada
Montreal, QC H2Y 2E7

For more information, contact DFO.Notmar-Notmar.MPO@dfo-mpo.gc.ca.

© His Majesty the King in Right of Canada,
as represented by the Minister of Fisheries, Oceans
and the Canadian Coast Guard, 2025.

Cat. No. Fs152-8E-PDF (Electronic PDF, English)
ISSN 2817-0075

Cat. No. Fs152-8F-PDF (Electronic PDF, French)
ISSN 2817-0083

A web version is available here:

[Notices to Mariners – Monthly Editions](#) (English)

[Avis aux navigateurs – Publications mensuelles](#) (French)

Explanatory Notes – Notices to Mariners (NOTMAR)

Geographical positions refer directly to the graduations of the largest scale Canadian Hydrographic Service chart (unless otherwise indicated).

Bearings refer to the true compass and are measured clockwise from 000° (North) clockwise to 359°; those relating to lights are from seaward.

Visibility of lights is that in clear weather.

Depths - The units used for soundings (metres, fathoms or feet) are stated in the title of each chart.

Elevations are normally given above Higher High Water, Large Tide (unless otherwise indicated).

Distances may be calculated as follows:

- 1 nautical mile = 1,852 metres (6,076.1 feet)
- 1 statute mile = 1,609.3 metres (5,280 feet)
- 1 metre = 3.28 feet

Temporary and Preliminary Notices to Mariners – Section 1A of *Notices to Mariners*

These notices are indicated by a (T) or a (P), respectively. Please note that nautical charts are not amended by the Canadian Hydrographic Service for temporary (T) and preliminary (P) notices. It is recommended that mariners chart these corrections in pencil. For the list of charts affected by (T) & (P) notices, please refer to the current [Notices to Mariners - Monthly Summary of Temporary and Preliminary Notices](#) publication.

Suggestions and Corrections Form

This form is specifically for suggestions and corrections to Notices to Mariners publications. It is available [online](#) and also in [fillable PDF format](#) included with the monthly publication ZIP file.

To submit comments and suggestions on possible improvements to the various publications and services: DFO.Notmar-Notmar.MPO@dfo-mpo.gc.ca.

To report chart discrepancies and/or corrections to the *Canadian Sailing Directions* booklets: Fill out the [Marine Information Reporting Form](#) and/or email chsinfo@dfo-mpo.gc.ca.

To report emergencies or navigational hazards: [Contact your nearest MCTS centre](#)

- VHF channel 16 (156.8 MHz)
- MF/HF frequency 2182 kHz/4125 kHz (where available)
- *16 on a cellphone (where available)

NOTMAR Website – Monthly Editions, Chart Corrections and Chart Patches

The NOTMAR website allows users to access the [monthly publications](#), [chart corrections](#), and [chart patches](#).

Users can subscribe for free to the [email notification service](#) to receive notifications when charts of interest are updated, including their patches, as well as when a new Monthly Edition of *Notices to Mariners* is published.

In addition, the monthly publication and related files to download, such as chart patches, can be obtained all together through the download of a single ZIP file.

Explanatory Notes – Canadian Hydrographic Service (CHS)

Chart Corrections – Section 2 of *Notices to Mariners*

Corrections to nautical charts will be listed in numerical order by chart number. Each chart correction listed applies only to that particular chart. Related charts, if any, will have their own specific correction listed separately.

Users should also refer to CHS *Chart 1: Symbols, Abbreviations and Terms* for additional information pertaining to the correction of charts.

The illustration below describes the elements that will comprise a typical Section 2 chart correction:

	Chart Number	Chart Title	Chart latest new edition date	Horizontal Chart Datum	Last Correction
Weekly Chart Correction Date	1312	Lac Saint-Pierre - New Edition - 10-MAY-2019 - NAD 1983			
	05-AUG-2022				LN/D. 24-SEP-2021
	Amend				46°03'32.4"N 073°03'21.6"W
		(See Chart 1 P16)		(Q2022035) LL(2177)	DFO(6410690-01)
	Chart Action	Chart 1 Reference No.	CCG Reference No.	List of Lights No.	CHS Reference No.

The last correction number is identified with the **LN/D** or **Last Notice to Mariners Number / Date**.

Mariners are advised that only the most critical changes that directly affect safety to navigation are issued in "Section 2 – Chart Corrections." This limitation is required to ensure that charts remain as clear and easy to read as possible. As a result, mariners may see minor discrepancies of a non-critical nature between information in official publications. For example, a small change in the nominal range or focal height of a light may not result in the production of a chart correction in *Notices to Mariners*, but may result in a correction in the [List of Lights, Buoys and Fog Signals](#) publication.

Note: In the case of a discrepancy between information provided on CHS charts relating to aids to navigation, and the *List of Lights, Buoys and Fog Signals* publication, the latter shall be deemed as containing the most up-to-date information.

Explanatory Notes – Marine Communications and Traffic Services (MCTS)

Navigational Warnings / Notices to Shipping

The Canadian Coast Guard (CCG) is implementing a number of changes to the aids to navigation system in Canada.

These changes are advertised as Navigational Warnings, formerly called Notices to Shipping¹, that are broadcast by the CCG, and are then followed up with Notices to Mariners, then charts are updated by hand correction, reprints or new editions.

Mariners are advised that all relevant Navigational Warnings (NAVWARN) should be kept until superseded by Notices to Mariners or through revised charts issued by the Canadian Hydrographic Service (CHS).

NAVWARN are accessible on the applicable regional page on the [CCG Navigational Warnings](#).

CHS is reviewing the impact of these changes with CCG and together are preparing an action plan on the issuing of chart revisions.

For further information, contact your regional NAVWARN Issuing Desk.

Atlantic Region (North) *Port aux Basques MCTS Centre “N” Series NAVWARN Canadian Coast Guard 49 Stadium Rd. P.O. Box 99 Port aux Basques, NL A0M 1C0 Telephone: 709-695-2168 or 1-800-563-9089 Facsimile: 709-695-7784 Email: NAVWARN.MCTSPortAuxBasques@innav.gc.ca	Central Region *Prescott MCTS Centre “C” Series NAVWARN Canadian Coast Guard 401 King Street West P.O. Box 1000 Prescott, ON K0E 1T0 Telephone: 613-925-0666 Facsimile: 613-925-4519 Email: NAVWARN.MCTSPrescott@innav.gc.ca
Atlantic Region (South) *Sydney MCTS Centre “M” Series NAVWARN Canadian Coast Guard 1190 Westmount Road Sydney, NS B1R 2J6 Telephone: 902-564-7751 or 1-800-686-8676 Facsimile: 902-564-7662 Email: NAVWARN.MCTSSydney@innav.gc.ca	Arctic Region *Iqaluit MCTS Centre <i>Operational from approximately mid-May until late December.</i> “A” Series NAVWARN Canadian Coast Guard P.O. Box 189 Iqaluit, NU X0A 0H0 Telephone: 867-979-5269 Facsimile: 867-979-4264 Email: NAVWARN.MCTSIqaluit@innav.gc.ca

*Service available in English and in French.

¹ The expression “Notice to Shipping” was changed to “Navigational Warning” in January 2019.

Table of Contents

Section 1: General and Safety Information	1
*505/23 Canadian Hydrographic Service – Magnetic Declination Calculations	1
*1207/23 Canadian Hydrographic Service – Inappropriate Geographical Names Review Process	1
*405/25 Saguenay–St. Lawrence Marine Park - Beluga Whale Protection: Slowdown Area at the Mouth of the Saguenay Fjord and Area Closure at Baie Sainte-Marguerite	1
*406/25 Saguenay–St. Lawrence Marine Park and Surrounding Waters – Whale Protection	4
*601/25 Protecting the North Atlantic Right Whale: Speed Restriction Measures in the Gulf of St. Lawrence	5
*901/25 Canadian Hydrographic Service – Electronic Navigational Charts	14
*902/25 Strait of Canso and Approaches / et les approches – Daybeacon Permanently Discontinued	16
Section 1A: Temporary and Preliminary Notices	17
Reminder – Comment Period for Active Preliminary Notices	17
*904(T)/25 Flemish Pass / Passe Flamande – Obstruction	17
Section 2: Chart Corrections	19
Section 3: Radio Aids to Marine Navigation Corrections	26
*905/25 Radio Aids to Marine Navigation 2025 (Atlantic, St. Lawrence, Great Lakes, Lake Winnipeg, Arctic and Pacific)	26
Section 4: Canadian Sailing Directions Corrections	28
Section 5: List of Lights, Buoys and Fog Signals Corrections	29

Numerical Index of Canadian Charts Affected

This numerical index lists all nautical charts mentioned in this monthly edition of Notices to Mariners. Only charts appearing in Section 2 of this publication require a chart correction. The appearance of charts in all other sections, particularly those related to the correction of other nautical publications, is included here for reference.

Chart No.	Pages	Chart No.	Pages	Chart No.	Pages
1203	17	8012	17		
1234	19				
1312	19, 20				
1317	17				
1350	20, 21				
1429	21				
1430	22, 31				
1438	22				
1550	23				
2011	17				
2022	23				
2069	30				
2077	30, 31				
2228	23				
2260	23				
2303	23				
4013	23				
4045	24				
4116	29				
4117	24				
4118	17				
4335	16				
4386	29				
4464	30				
4466	30				
4832	24				
4853	29				
4862	29				
4906	30				
4921	17				
5449	24				
5533	24				
7621	25				
7665	25				

Section 1: General and Safety Information

***505/23 Canadian Hydrographic Service – Magnetic Declination Calculations**

(Recurrent publication of notice *505/23, originally published in the *Notices to Mariners – Monthly Eastern Edition* 05/2023 publication.)

Mariners are advised that CHS has adopted the harmonized World Magnetic Model (WMM), as found on the NCEI/NOAA website. Old compass rose declination information on CHS navigational products can be updated using this website: <https://www.ngdc.noaa.gov/geomag/calculators/magcalc.shtml#declination>. While the differences in the model declinations are small each year, they can become more significant over a large period of time.

***1207/23 Canadian Hydrographic Service – Inappropriate Geographical Names Review Process**

(Recurrent publication of notice *1207/23, originally published in the *Notices to Mariners – Monthly Eastern Edition* 12/2023 publication.)

The records of the Canadian Hydrographic Service could contain geographical names that may be considered inappropriate, offensive and derogatory. Geographical naming authorities are in the process of addressing many offensive place names, the review process is underway. For more information, about inappropriate geographical names, please see the [following announcement](#).

***405/25 Saguenay–St. Lawrence Marine Park - Beluga Whale Protection: Slowdown Area at the Mouth of the Saguenay Fjord and Area Closure at Baie Sainte-Marguerite**

(Recurrent publication of notice *405/25, originally published in the *Notices to Mariners – Monthly Eastern Edition* 04/2025 publication.)

The Saguenay–St. Lawrence Marine Park and its surrounding area are at the heart of endangered beluga whale critical summer habitat. Marine mammal protection measures have been put in place in accordance with the *Marine Activities in the Saguenay–St. Lawrence Marine Park Regulations* within the limits of the Marine Park.

However, important feeding, calving and rearing areas for beluga whales require greater protection to ensure the recovery of the species. The portion of the Saguenay situated between the mouth of the Fjord and Baie Sainte-Marguerite is one of the areas most used by females and their young from May to October. The mouth of the Saguenay is known as a feeding ground and Baie Sainte-Marguerite as a calving and rearing area.

In order to prevent collisions with beluga whales, a compulsory 15-knot slowdown area is in effect from May 1st to October 31st at the mouth of the Saguenay. To ensure tranquility for female belugas and their young during the critical calving period, access to Baie Sainte-Marguerite is prohibited to all vessels from June 21st to September 21st, except for special authorizations (see description below).

For safety reasons, the slowdown area measure at the mouth of the Saguenay Fjord does not apply to cargo ships (see the monthly edition of Notice to Mariners from May to October for voluntary protection measures in the St. Lawrence Estuary). An enhanced vigilance is, however, recommended to all navigators between the mouth of the Saguenay Fjord and Baie Sainte-Marguerite for the protection of beluga whales.

For more information on the Saguenay–St. Lawrence Marine Park, see notice 5C of the *Notices to Mariners Annual Edition 2025* or visit the [Saguenay-St. Lawrence Marine Park website](#).

REGULATORY PROTECTION MEASURES — BELUGA WHALE

Entire Marine Park Territory:

- When beluga whales are less than half a nautical mile (926 metres) from a motorized vessel, the vessel must maintain a steady speed of between 5 and 10 knots.
- All vessels, including human-powered vessels (kayaks and canoes), must continue to move forward and maintain their heading.
- All vessels must maintain a minimum distance of 400 metres from beluga whales at all times.

For more information concerning the regulations, consult the [“Navigate” section of the Saguenay-St. Lawrence Marine Park website](#).

Mouth of the Saguenay Fjord (Figure 1) — Slowdown Area (area crosshatched in red):

- Maximum speed at the mouth of the Saguenay between buoys S7 and S8 and the ferry docks between Baie-Sainte-Catherine and Tadoussac is 15 knots from May 1st to October 31st.

Baie Sainte-Marguerite (Figure 2) — Area Closure (red area):

- From June 21st to September 21st, vessels must not enter the red area, which follows a line between Cap Nord-Ouest and Cap Sainte-Marguerite.
- Special authorizations are granted only for kayaks, canoes and recreational fishermen who must travel without stopping along a corridor within 10 metres of the shore or in shallow areas.

VOLUNTARY PROTECTION MEASURES

Baie Sainte-Marguerite sector (Figure 2) — Transit Area (area crosshatched in yellow):

- From June 21st to September 21st, navigation in this area is recommended at a speed of between 5 and 10 knots without stopping.

The purpose of this transit area is to favour respect of the *Marine Activities in the Saguenay–St. Lawrence Marine Park Regulations*, since beluga whales are often present in the Baie Sainte-Marguerite sector.

Information

All incidents, including collisions with whales, must be reported without delay by calling 1-866-508-9888. For any other situation concerning a marine mammal that is either dead or in trouble, contact the Marine Mammal Emergency Response Network at 1-877-722-5346, or use VHF channel 16.

Figure 1

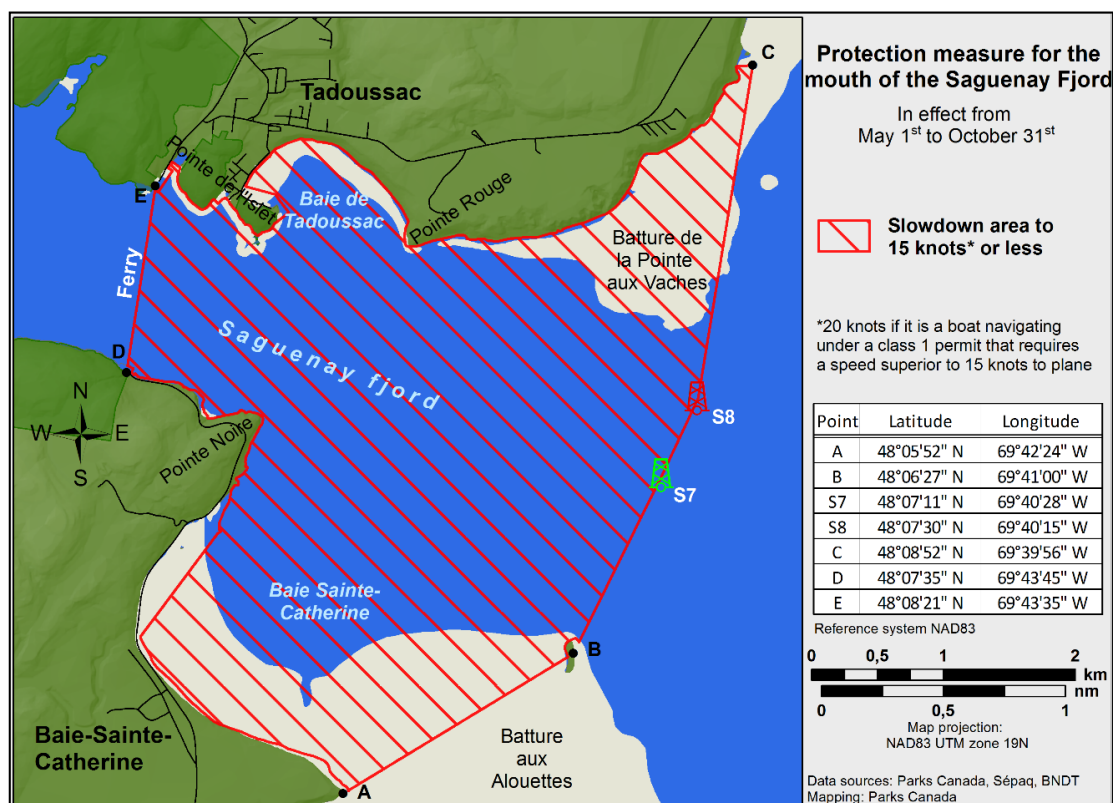
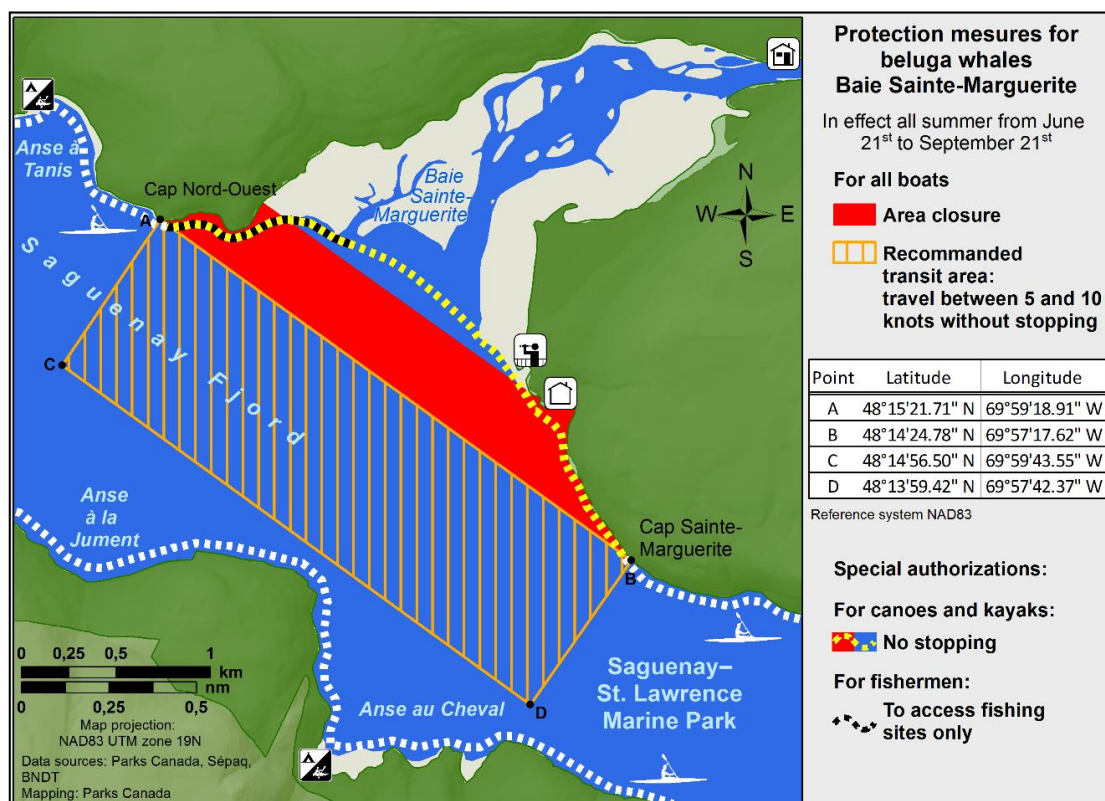


Figure 2



***406/25 Saguenay–St. Lawrence Marine Park and Surrounding Waters – Whale Protection**

(Recurrent publication of notice *406/25, originally published in the *Notices to Mariners – Monthly Eastern Edition* 04/2025 publication.)

The waters in and around the Saguenay–St. Lawrence Marine Park are well known for the resident endangered beluga population and the wide diversity of whales that migrate there to feed, particularly between April and November.

REGULATORY PROTECTION MEASURES

All whale species that are found in the St. Lawrence are protected under the *Marine Mammal Regulations*, pursuant to the *Fisheries Act*. Within the boundaries of the Marine Park, specific measures are set out in the *Marine Activities in the Saguenay–St. Lawrence Marine Park Regulations*, pursuant to the establishment of the *Saguenay–St. Lawrence Marine Park Act*. Any collision with a marine mammal within the Marine Park must immediately be reported to a park warden at 1-866-508-9888. For collisions that occur outside the Marine Park or for any situation involving a marine mammal that is dead or in trouble, contact the emergency network at 1-877-722-5346 or on VHF channel 16.

For more information on the Saguenay–St. Lawrence Marine Park, see notice 5C of the *Notices to Mariners Annual Edition 2025*.

VOLUNTARY PROTECTION MEASURES

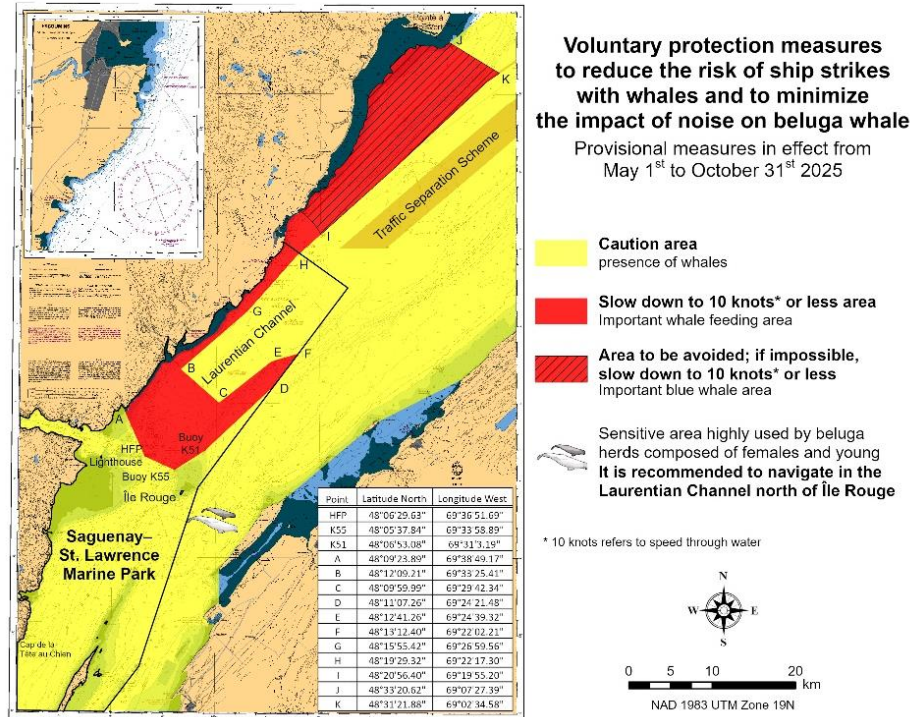
Provisional measures in effect from May 1 to October 31, 2025. See map at the end of this notice.

These measures apply to merchant vessels and cruise ships between Pointe à Boisvert and Cap de la Tête au Chien to prevent collisions with whales. These measures should only be taken when they will not jeopardize navigational safety.

Caution area (yellow area): To reduce the risk of collisions with whales that can be present anywhere in this area, heightened vigilance of navigators is critical. Posting a lookout is recommended in order to increase the chances of seeing the whales and thus taking necessary measures to avoid them. If bypassing the whales is not possible, slow down and wait for the animals to move away to a distance greater than 400 metres (0.215 nautical miles) before resuming original speed. It is more difficult to see the animals at night therefore increased caution is recommended.

Slow down to 10 knots or less area (red area): To reduce the risk of collisions with whales in this feeding area, it is recommended that vessels slow down to a maximum speed through the water of 10 knots and post a lookout. It is further recommended to remain in the Laurentian Channel to the north of Île Rouge to minimize the impact of noise in a sensitive area south of this island, which is highly frequented by herds of beluga whales composed of females and young.

Area to be avoided (hatched red area): To reduce noise and the risk of collisions with whales, vessels should avoid transiting through this area which is highly frequented by blue whales, an endangered species. If the area cannot be avoided, slow down to a speed through the water of 10 knots or less.



*601/25 Protecting the North Atlantic Right Whale: Speed Restriction Measures in the Gulf of St. Lawrence

(Recurrent publication of notice *601/25, originally published in the *Notices to Mariners – Monthly Eastern Edition* 06/2025 publication.)

Reference: Notice 501/25 is cancelled

Purpose

This notice describes the speed and navigational restriction zones that vessels must follow in the Gulf of St. Lawrence.

The Government of Canada has established these zones to reduce the risk of vessel colliding with North Atlantic right whales (NARW).

Background

Due to changing migration patterns of North Atlantic right whales and their increased presence in the Gulf of St. Lawrence, the Government of Canada has set seasonal speed restrictions in specific zones. These speed restrictions zones are defined as “static zones”, “dynamic shipping zones”, “seasonal management areas”, a “voluntary seasonal slowdown zone” and a “restricted area”. [See the map below for details.](#)

Note: Vessels **must follow** Navigational Warnings outlining the speed restrictions. The *Interim Order No.3 for the Protection of North Atlantic Right Whales (Eubalaena Glacialis) in the Gulf of St. Lawrence, 2025* enables the issuance of Navigational Warnings (NAVWARNs) imposing speed restrictions and navigation restrictions.

Speed restriction zones are described in monthly Notices to Mariners (NOTMARs), which are published by the Canadian Coast Guard. The status of these zones is broadcasted through NAVWARNs, which are published by the Coast Guard’s Marine Communications and Traffic Services Centres.

CHANGES TO SPEED RESTRICTION ZONES AND MEASURES

Based on consultations with industry and on scientific data, changes to the speed restriction zones are effective since April 16th, 2025, while the restricted area will be implemented based on whale presence.

A voluntary seasonal slowdown of 10.0 knots over the ground spanning from Cabot Strait (a line running from Cape North NS to Cape Ray NL) to the eastern edge of dynamic shipping zone E will be implemented at the beginning and end of the North Atlantic right whale season (Spring and fall).

Please check the latest NAVWARN for all speed restrictions currently in effect.

SPEED RESTRICTION MEASURES FOR 2025

These restrictions are in effect from **April 16 to November 15, 2025**.

Note: This is the third interim order for the 2025 North Atlantic Right Whale (NARW) season, which started on April 16th, during the 2025 federal election period. The first was signed for a 30-day period, to provide protection for the species, while meeting Caretaker Convention requirements. The second Interim Order extended the protective measures for 30 days to provide continuity while Cabinet is formed. The third interim order was signed to cover the remaining of the NARW season until November 15th, 2025.

Exceptions

The following exception will apply to **all** measures:

- a) a vessel in distress or providing assistance to a person or a vessel in distress;
- b) a government vessel being used:
 - i) for law enforcement activities;
 - ii) for search and rescue operations; or
 - iii) to ensure the competency of the crew or the operational readiness of the vessel or crew with respect to such activities or operations.

STATIC ZONES

In the static zones, **all** vessels above **13 m** in length overall (LOA) must proceed at a speed of not more than 10.0 knots over the ground.

Exclusions

Air cushion vessels operated by or on behalf of the Government of Canada that are engaged in ice-clearing activities from April to June in and around Chaleur Bay are exempted when in operation.

36.57 m (20-fathom) shallow water protocol exclusion

Vessels engaged in any commercial fishing activity may proceed at a safe operational speed in waters not more than 36.57 m (20 fathom) deep within the static zones.

If a notice to fish harvesters and a NAVWARN state that at least one North Atlantic right whale has been detected in waters within a static zone or its associated buffer zone that are not more than 36.57m deep, the speed limit of 10.0 knot over the ground will apply in the concerned zone(s) to all vessels above 13m in length overall (LOA). The speed restriction will be in effect for 15 days after the day on which the whale was detected. The buffer zones associated with the static zones are located 5 miles north and south of their adjacent border in waters less than 36.57m deep.

Coordinates for the northern static zone:

- 50° 20' N 065° 00' W
- 49° 13' N 065° 00' W
- 48° 40' N 064° 13' W
- 48° 40' N 062° 40' W
- 48° 03' N 061° 07.5' W
- 47° 58.1' N 061° 03.5' W
- 48° 00' N 061° 00' W
- 49° 04' N 061° 00' W
- 49° 04' N 062° 00' W
- 49° 43' N 063° 00' W
- 50° 20' N 063° 00' W

Coordinates for the southern static zone:

- 48° 40' N 065° 00' W
- 48° 40' N 062° 40' W
- 48° 03' N 061° 07.5' W
- 47° 58.1' N 061° 03.5' W
- 47° 10' N 062° 30' W
- 47° 10' N 065° 00' W

DYNAMIC SHIPPING ZONES

There are five dynamic shipping zones (DSZ) located in the routing systems north and south of Anticosti Island: A, B, C, D and E

Coordinates for the dynamic shipping zones:

Zone A

- 49° 41' N, 065° 00' W
- 49° 20' N, 065° 00' W
- 49° 11' N, 064° 00' W
- 49° 22' N, 064° 00' W

Zone B

- 49° 22' N, 064° 00' W
- 49° 11' N, 064° 00' W
- 48° 48' N, 063° 00' W
- 49° 00' N, 063° 00' W

Zone C

- 49° 00' N, 063° 00' W
- 48° 48' N, 063° 00' W
- 48° 24' N, 062° 00' W
- 48° 35' N, 062° 00' W

Zone D

- 50° 16' N, 064° 00' W
- 50° 00' N, 064° 00' W
- 49° 56' N, 063° 00' W
- 50° 16' N, 063° 00' W

Zone E

- 48° 35' N 062° 00' W
- 48° 24' N 062° 00' W
- 48° 03' N 061° 07.5' W
- 47° 58.1' N 061° 03.5' W
- 48° 00' N 061° 00' W
- 48° 10.5' N 061° 00' W

When a North Atlantic right whale is detected in a dynamic shipping zone or in the buffer zones, located 5 nautical miles south or 2.5 nautical miles from the eastern and western edges of the dynamic shipping zones:

- All vessels will be notified via a NAVWARN; and
- Vessels above **13 m** in length overall (LOA) must proceed at a speed of not more than 10.0 knots over the ground within that zone.

Even though dynamic shipping zones overlap with static zones, vessels can travel at a safe operational speed in dynamic shipping zones when they are not under speed restriction. Mariners must also keep in mind that North Atlantic right whales may be nearby.

SPEED RESTRICTIONS IN THE DYNAMIC SHIPPING ZONES

The detection of North Atlantic right whales in one or more dynamic shipping zone(s), or in their buffer zones, will trigger a speed restriction in the concerned zone(s). The speed restriction in the dynamic shipping zone(s) will be in effect for 15 days from the date of detection. In the event of a new North Atlantic right whale detection occurring in the last 7 days of the 15-day slowdown period, the speed restriction will be extended for an additional 15 days from the date of the new detection. This would continue until no NARW are detected.

When a NAVWARN is issued implementing a speed restriction in one or more dynamic shipping zone(s), vessels above **13 m** in length (LOA) must not exceed a speed of 10.0 knots over the ground. Within any dynamic zone that is not subject to a speed restriction, mariners may proceed at a safe operational speed. Mariners are encouraged to take into consideration the potential for their vessel striking North Atlantic right whales when considering a “safe operational speed” during navigation.

SEASONAL MANAGEMENT AREAS

Seasonal management area 1 (SMA-1) and seasonal management area 2 (SMA-2) are speed restriction areas located north and south of dynamic shipping zone E, respectively.

Within seasonal management areas, vessels above **13 m** in length (LOA):

- must restrict their speed so as not to exceed 10.0 knots over the ground from April 16th to June 24th, 2025; **and**
- are allowed to proceed at a safe operational speed from June 25th to November 15th, 2025, unless a North Atlantic right whale is detected. If a whale is detected, a speed restriction of 10.0 knots over the ground will be triggered for 15 days from the date of detection. In the event of a new North Atlantic right whale detection occurring in the last 7 days of the 15-day slowdown period, the speed restriction will be extended for an additional 15 days from the date of the new detection. This would continue until no North Atlantic right whales are detected.

Coordinates for the SMA-1:

- 49° 04' N 062° 00' W
- 49° 04' N 061° 00' W
- 48° 10.5' N 061° 00' W
- 48° 35' N 062° 00' W

Coordinates for the SMA-2:

- 48° 24' N 062° 00' W
- 48° 03' N 061° 07.5' W
- 47° 58.1' N 061° 03.5' W
- 47° 26.69' N 062° 00' W

RESTRICTED AREA

In the summer months, an important proportion of the total North Atlantic right whale population gathers for feeding and surface activity near the [Shediac Valley](#). Since this makes the North Atlantic right whale more susceptible to vessel collisions, a mandatory restricted area will be implemented in and near the Shediac Valley and will come into force once 80% of the restricted area is closed to fishing for the season as per the [Department of Fisheries and Oceans' right whale closure protocol](#) or at the latest on June 16th, 2025. The restricted area will be lifted on September 26, 2025, unless North Atlantic right whale detections are reported in high number, which would extend the restricted area beyond September 26.

The size and location of the area are determined based on historical detection data of North Atlantic right whales. All necessary details can be found in the *Interim Order No.3 for the Protection of North Atlantic Right Whales (Eubalaena Glacialis) in the Gulf of St. Lawrence, 2025*. Triggering and lifting of the restricted area will be communicated to mariners through NAVWARNs and notices to fish harvesters.

Vessels above **13 m** in length (LOA) will be required to:

- avoid the area unless they are part of the exceptions listed in the *Interim Order No.3 for the Protection of North Atlantic Right Whales (Eubalaena Glacialis) in the Gulf of St. Lawrence, 2025*;
- transit the area at a speed not exceeding 8.0 knots over the ground if they are part of the exceptions.

The following exceptions will apply to the restricted area. The following listed vessels can travel through the area at not more than 8.0 knots over the ground:

- A vessel being used for commercial fishing;
- A vessel being used for fishing under the authority of a licence issued under the *Aboriginal Communal Fishing Licences Regulations*;
- A vessel being used for research purposes on behalf of the Government of Canada
- A vessel being used as part of the Department of Fisheries and Oceans' Marine Mammal Response Program to assist a marine mammal or sea turtle in distress or to access or retrieve a deceased marine mammal or sea turtle;
- A vessel authorized by the Government of Canada to retrieve or identify the location of abandoned or lost fishing gear;
- A vessel involved in pollution response operations;
- A vessel avoiding immediate or unforeseen danger;
- A vessel involved in research relating to right whales as part of a project that has received funding from the Government of Canada.

The following vessels can travel through the restricted area at a speed over 8.0 knots, but below 10.0 knots over the ground as required by the static speed restriction zone:

- A vessel being used by an employee of the Government of Canada or peace officer who is performing their duties.

Coordinates for the restricted area:

- 48°31.8' N 063°39.6' W
- 48°24.72' N 063°17.88' W
- 47°18.84' N 064°10.8' W
- 47°27.18' N 064°30.72' W

Inclement weather exception

Mariners will be notified in advance via a NAVWARN should the speed restriction status change in any zone or area, due to inclement weather.

Within any zone or area that is no longer subject to a speed restriction due to adverse weather conditions, mariners may proceed at a safe operational speed. Mariners are however encouraged to take into consideration the potential for their vessel striking North Atlantic right whales when considering a "safe operational speed" during navigation.

*Non-excepted vessels are still prohibited from transiting through the restricted area.

VOLUNTARY SEASONAL SLOWDOWN IN CABOT STRAIT

To coincide with the North Atlantic right whales entering and exiting the Gulf of St. Lawrence in large numbers, a voluntary seasonal slowdown is being put in place in Cabot Strait from April 16th to June 24th, 2025, and from September 3rd to November 15th, 2025.

- During these periods, vessels above 13 m in length (LOA) are requested to voluntarily reduce their speed as to not exceed 10.0 knots over the ground.

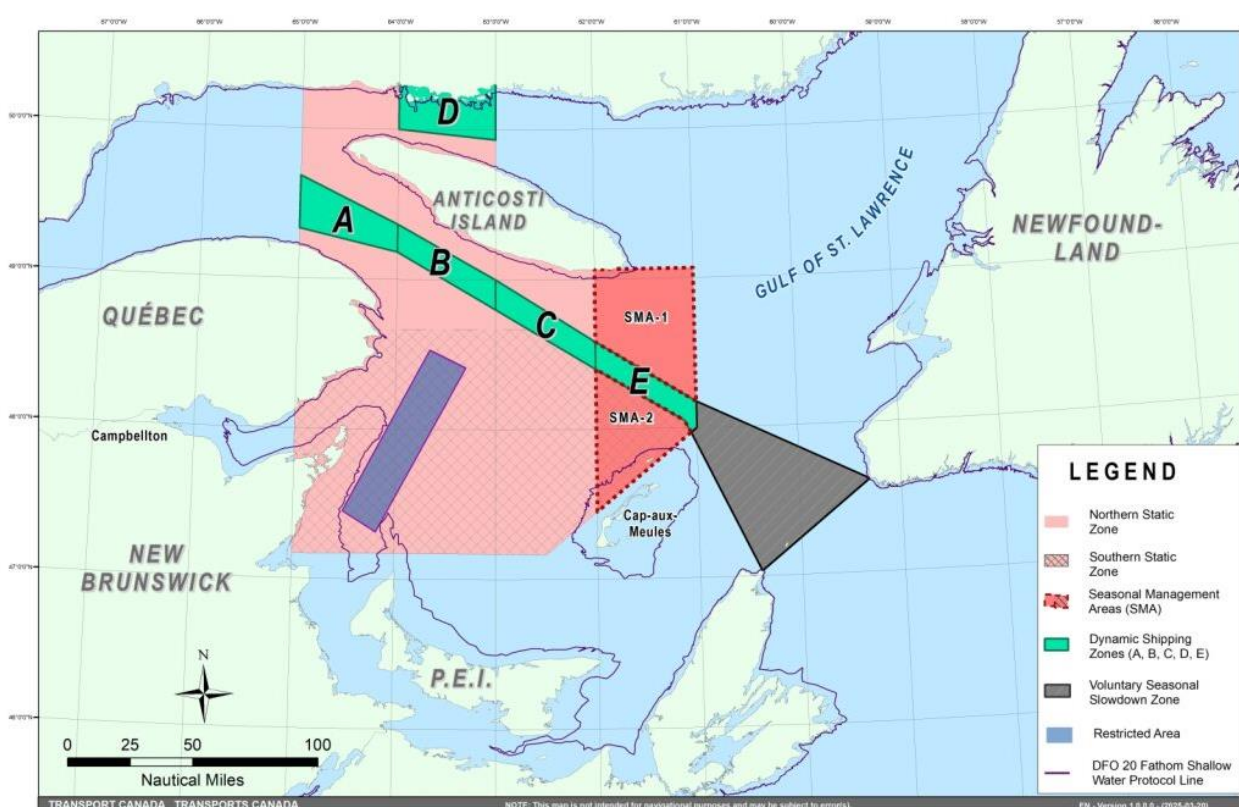
Voluntary seasonal slowdown zone coordinates:

- 48° 10.5' N 061° 00' W
- 47° 37.2' N 059° 18.5' W
- 47° 02' N 060° 23.7' W
- 47° 58.1' N 061° 03.5' W
- 48° 00' N 061° 00' W

Map of the Gulf of St. Lawrence

The following map shows

- the static zones (north and south), in pink;
- the dynamic shipping zones (A, B, C, D and E), in green;
- the seasonal management areas, in dark pink;
- the voluntary seasonal slowdown zone, in grey;
- the restricted area, in dark blue; and
- the 36.57 m (20 fathom) shallow water protocol line.



This map is for visual representation only and is not to be used for navigation or enforcement.

ROSEWAY BASIN – AREA TO BE AVOIDED

The Roseway Basin, located approximately 20 nautical miles south of Cape Sable Island, Nova Scotia, is a critical habitat for North Atlantic right whales, which have been observed to gather in the area on a seasonal basis in Canadian waters. This critical habitat is also located near key shipping routes. In 2007, Canada, with the support of many groups with varied interests, proposed to the International Maritime Organization (IMO) the establishment of a seasonal Area to be Avoided in the Roseway Basin to protect North Atlantic right whales, which IMO accepted and adopted.

To reduce the risk of vessels colliding with North Atlantic right whales, it is recommended that vessels of 300 gross tonnages and more, in transit during the period of June 1 through December 31, avoid the Roseway Basin area. Smaller vessels are also encouraged to avoid passage through this area. If passage is necessary within the Area to be Avoided, it is recommended that all mariners decrease their vessel speed to no more than 10 knots, when safe to do so.

Roseway Basin coordinates:

- 43° 16' N 064° 55' W
- 42° 47' N 064° 59' W
- 42° 39' N 065° 31' W
- 42° 52' N 066° 05' W

BAY OF FUNDY – VOLUNTARY SLOWDOWN

The Grand Manan Basin located in the Bay of Fundy is identified as a critical habitat for the North Atlantic right whale. When North Atlantic right whales are detected in the Bay of Fundy shipping lanes and near the Grand Manan Basin area, the Fundy Traffic will ask vessels to voluntarily slowdown to 10 knots via VHF channel 12 or 14 at corresponding Calling-in-Points.

NAVWARN BROADCASTS

The Canadian Coast Guard issues NAVWARNs:

- by radio broadcast; and
- online at [Canada's Maritime Information Portal](#) and its [Navigational Warnings](#) site, using the [North Atlantic Right Whale](#) category.

Mariners must ensure they have accurate and up-to-date information about the protection of the North Atlantic right whale, as in all applicable NOTMARs and NAVWARNs.

For the North Atlantic right whale speed restrictions, the NAVWARN(s) currently in effect will be provided to vessels subject to the *Vessel Traffic Services Zone Regulations* or the *Eastern Canada Vessel Traffic Services Zone Regulations*:

Outbound vessels will receive NAVWARNs

- at Calling-in-Point 10 (St-Laurent); or
- upon a departure downstream from the Quebec pilot station (including the Saguenay River, Chaleur Bay, Miramichi Bay, etc.)

Inbound vessels will receive NAVWARNs

- when a clearance to enter Canadian waters is granted

Vessels in transit will receive NAVWARNs

- at the last reporting point prior to entering the mandatory speed restriction zones; and/or
- at 10 nautical miles before they enter the mandatory speed restriction zones

For those vessels not subject to the above-mentioned regulations, vessel operators are required to monitor broadcasts by the Canadian Coast Guard's Marine Communications and Traffic Services network for the most up to date information. For marine radio frequencies and broadcast times, information may be found in the [Radio Aids to Marine Navigation](#) publication.

AIDS TO NAVIGATION

The Canadian Coast Guard broadcasts virtual Automatic Identification System (AIS) aids to navigation (AIS AtoN) in specific areas. These aids may notify mariners of dynamic shipping zones and/or seasonal management areas subject to speed restrictions.

Each zone is delimited by four to six virtual AIS AtoN, which can be displayed on a ship's navigation equipment, such as

- Electronic Chart Display and Information System (ECDIS);
- Electronic Chart System (ECS);
- RADAR;
- Minimum Keyboard Display (MKD); and
- Electronic Nautical Chart (ENC).

The Canadian Coast Guard broadcasts the virtual AIS AtoN only when a speed restriction is in effect in one or more testing zones.

Mariners must select the virtual AIS AtoN symbol to view a message such as "SectA1 Spd Lim 10 kt." This message refers to a speed restriction in effect for a specific zone.

Note: This system is not the primary method of communicating this information.

COMPLIANCE AND ENFORCEMENT

Vessels must comply with the Interim Orders made pursuant to the *Canada Shipping Act, 2001*, and any NAVWARNs broadcasted and published by the Canadian Coast Guard relating to the Interim Orders, aimed at regulating the navigation for the purposes of protecting the North Atlantic right whales.

If a vessel does not comply with the Interim Orders or instructions in the NAVWARNs related to the Interim Orders, the vessel could face:

- administrative monetary penalties up to a maximum of CAN \$250,000; and/or
- penal sanctions under the *Canada Shipping Act, 2001* is liable on summary conviction to a fine of not more than CAN \$1,000,000 or to imprisonment for a term of not more than 18 months, or to both.

If a vessel appears to have violated the speed restriction, Transport Canada Marine Safety inspectors will review all information provided through AIS and seek an explanation from the master.

No exemptions to the speed restriction will be granted in advance. However, if a deviation from the speed restrictions is necessary for safety reasons, the following information must be entered into the bridge logbook:

- reason(s) for deviation;
- speed at which vessel is operated;
- latitude and longitude at time of deviation;
- time and duration of deviation; and
- master of the vessel shall sign and date the bridge logbook entry.

For any deviation, Transport Canada will review and consider reasons such as:

- navigating to ensure vessel safety;
- weather conditions;
- force majeure (unforeseeable circumstances); and
- responding to emergencies.

REPORT A NORTH ATLANTIC RIGHT WHALE SIGHTING

If you see **live, free-swimming whales**:

- **Email:** DFO.GLFWhales-BaleinesGLF.MPO@dfo-mpo.gc.ca
- When reporting sightings of North Atlantic right whales, you must include: GPS location (latitude and longitude), date and time of sighting, number of marine mammals, **photograph(s)/video(s) collected** and if possible, behavior of marine mammals observed (ex., feeding, travelling, diving).

SIGHTINGS OF ENTANGLED, INJURED OR DEAD NORTH ATLANTIC RIGHT WHALE

If you see a North Atlantic right whale (and all other marine mammals) **entangled, injured or dead**, please document and report it immediately to the regional Response Network.

- When documenting you should collect: GPS location (latitude and longitude), date and time of sighting, number of marine mammals, photograph(s)/video(s), and description of the incident to provide to the Response Network.

Southern part of the Gulf of St. Lawrence (New Brunswick, Nova Scotia & Prince Edward Island)

Marine Animal Response Society
Telephone: 1-866-567-6277

Newfoundland and Labrador

Whale Release and Strandings Newfoundland and Labrador (Tangly Whales Inc.)
Telephone: 1-888-895-3003 or 1-709-895-3003

Québec

Réseau québécois d'urgences pour les mammifères marins (RQUMM)
Telephone: 1-877-722-5346

Report a marine mammal or sea turtle incident or sighting:

Visit the website for more information on [reporting other marine mammal or sea turtle sighting](#) and incidents.

Please consult [Whale Insight](#) for the latest right whale observations.

***901/25 Canadian Hydrographic Service – Electronic Navigational Charts**

S-57 ENC Number	Chart Title	ENC Compilation Scale	Published
New Charts			
CA53MLGA (Edn 1.000)	Port4400N07640W	1:6 000	2025-09-19
CA53NLGA (Edn 1.000)	Port4410N07640W	1:6 000	2025-09-19
CA53NLHA (Edn 1.000)	Port4410N07630W	1:6 000	2025-09-19
CA53PLGA (Edn 1.000)	Port4420N07640W	1:6 000	2025-09-19
CA53PLHA (Edn 1.000)	Port4420N07630W	1:6 000	2025-09-19
CA53PLJA (Edn 1.000)	Port4420N07620W	1:6 000	2025-09-19
CA53PLKA (Edn 1.000)	Port4420N07610W	1:6 000	2025-09-19
CA53PLLA (Edn 1.000)	Port4420N07600W	1:6 000	2025-09-19
CA53QLHA (Edn 1.000)	Port4430N07630W	1:6 000	2025-09-19
CA53QLJA (Edn 1.000)	Port4430N07620W	1:6 000	2025-09-19
CA53QLKA (Edn 1.000)	Port4430N07610W	1:6 000	2025-09-19
CA53QLLA (Edn 1.000)	Port4430N07600W	1:6 000	2025-09-19
CA53QLMA (Edn 1.000)	Port4430N07590W	1:6 000	2025-09-19
CA53RLLA (Edn 1.000)	Port4440N07600W	1:6 000	2025-09-19
CA53RLMA (Edn 1.000)	Port4440N07590W	1:6 000	2025-09-19
CA53RLNA (Edn 1.000)	Port4440N07580W	1:6 000	2025-09-19
CA53SLNA (Edn 1.000)	Port4450N07580W	1:6 000	2025-09-19
CA53SLPA (Edn 1.000)	Port4450N07570W	1:6 000	2025-09-19
CA53TLNA (Edn 1.000)	CA53TLNA	1:6 000	2025-09-19
CA53TLPA (Edn 1.000)	Port4460N07570W	1:6 000	2025-09-19
CA53TLQA (Edn 1.000)	Port4460N07560W	1:6 000	2025-09-19
CA53TLRA (Edn 1.000)	Port4460N07550W	1:6 000	2025-09-19
CA53ULQA (Edn 1.000)	Port4470N07560W	1:6 000	2025-09-19
CA53ULRA (Edn 1.000)	Port4470N07550W	1:6 000	2025-09-19
CA53ULSA (Edn 1.000)	Port4470N07540W	1:6 000	2025-09-19
CA53VLSA (Edn 1.000)	Port4480N07540W	1:6 000	2025-09-19
CA571563 (Edn 1.000)	CA571563	1:2 000	2025-09-05
CA571564 (Edn 1.000)	CA571564	1:6 000	2025-09-05
CA571565 (Edn 1.000)	CA571565	1:6 000	2025-09-05
CA571567 (Edn 1.000)	CA571567	1:6 000	2025-09-05
CA571568 (Edn 1.000)	CA571568	1:11 000	2025-09-05
CA571569 (Edn 1.000)	CA571569	1:11 000	2025-09-05
CA571570 (Edn 1.000)	CA571570	1:11 000	2025-09-05
CA571571 (Edn 1.000)	CA571571	1:11 000	2025-09-05
CA571574 (Edn 1.000)	CA571574	1:11 000	2025-09-05

New Editions			
CA44JN4A (Edn 5.000)	Transit4700N07100W	1:22 500	2025-09-26
CA542M9A (Edn 5.000)	Port4540N07380W	1:6 000	2025-09-19
CA542MAA (Edn 3.000)	Port4540N07370W	1:6 000	2025-09-19
CA55WSSA (Edn 3.000)	CA55WSSA	1:11 000	2025-09-12
Charts Permanently Withdrawn			
CA473025	Grindstone Island to/à Carleton Island	Cancelled by CA573361	
CA473034	Summerland Group to/à Grindstone Island		
CA473035	Whaleback Shoal to/au Summerland Group	Cancelled by CA473275,CA473275,CA473275, CA473275	
CA473036	Carleton Island to/au Charity Shoal	Cancelled by CA473276,CA473276,CA473276, CA373496,CA373063,CA373063	
CA473275	Cardinal to/à Whaleback Shoal	Cancelled by CA573389,CA573389,CA573388, CA573388,CA473035,CA473035, CA473035,CA473035	
CA570101	Sooke Inlet to/à Parry Bay		
CA570138	Esquimalt Harbour	Cancelled by CA571563	
CA570214	Approaches to/Approches à Oak Bay		
CA570562	Victoria Harbour		
CA573388	Brockville Narrows	Cancelled by CA473275,CA473275,CA473275, CA473275	
CA573389	Prescott/Ogdensburg	Cancelled by CA473275,CA473275,CA473275, CA473275	
CA670655	Special Operations Chart, DND Jetty, Manor Pt		
CA670736	Esquimalt Graving Dock	Cancelled by CA570138,CA570138,CA570138, CA570138,CA570138,CA570138, CA570138,CA570138	
CA670740	Ogden Point	Cancelled by CA570562,CA570562,CA570562, CA570562,CA570562,CA570562, CA570562	

***902/25 Strait of Canso and Approaches / et les approches – Daybeacon Permanently Discontinued**

Reference chart: 4335

The following daybeacon has been permanently discontinued:

Aid Name	LL #	Position
Guysborough Daybeacon	5685	45° 22' 33.0"N 061° 29' 24.7"W

(G2025-110)

Section 1A: Temporary and Preliminary Notices

Reminder – Comment Period for Active Preliminary Notices

This is a reminder that the comment period is still open for the following active Preliminary notices:

Notice #	Reference Chart #	Aids Affected (LL #)	Intent of Notice
Atlantic Coast			
708(P)/25	4118	241	Fog Signal to be Discontinued
709(P)/25	1317	1913	Aid to Navigation to be Abandoned
809(P)/25	1203	1784, 1784.5	Aids to Navigation to be Abandoned
810(P)/25	4921	1392.7, 1395, 1396	Aids to Navigation to be Abandoned
Inland Waters			
816(P)/25	2011	List	Buoys to be Discontinued

Please refer to the [Notices to Mariners - Monthly Summary of Temporary and Preliminary Notices](#) publication for details.

Newfoundland and Labrador Coast

Temporary Notices

*904(T)/25 Flemish Pass / Passe Flamande – Obstruction

Reference chart: 8012

A Concrete Gravity Structure has been installed offshore in the vicinity of 46° 47.716'N 048° 03.675'W and will remain a navigational hazard until it is removed.

(NW-N-0642-25)

Preliminary Notices

No notices applicable for this edition.

Atlantic Coast

Temporary Notices

No notices applicable for this edition.

Preliminary Notices

No notices applicable for this edition.

Inland Waters

Temporary Notices

No notices applicable for this edition.

Preliminary Notices

No notices applicable for this edition.

Section 2: Chart Corrections

1234 - Cap de la Tête au Chien au/to Cap aux Oies - New Edition - 04-NOV-2011 - NAD 1983

19-SEP-2025

LNMD. 29-NOV-2024

Delete landfall light Iso Y 2s36m8M
(See Chart 1, P1)

47°52'20.5"N 069°40'52.7"W

(Q2025052) LL(1827) DFO(6411302-02)

1234 - Port de Pointe-au-Pic - New Edition - 04-NOV-2011 - NAD 1983

19-SEP-2025

LNMD. 29-NOV-2024

Affix patch

47°37'22.6"N 070°08'15.2"W

Download Patch - https://www.notmar.gc.ca/chsftp/patches/1234_6411302_1_202508201150.pdf

DFO(6411302-01)

1312 - Port de Sorel-Tracy - New Edition - 10-MAY-2019 - NAD 1983

26-SEP-2025

LNMD. 21-FEB-2025

Add depth of 8 metres
(See Chart 1, I10)

46°02'58.5"N 073°07'13.1"W

DFO(6411311-01)

Delete depth of 10,9 metres
(See Chart 1, I10)

46°02'57.6"N 073°07'06.6"W

DFO(6411311-02)

Add depth of 10,6 metres
(See Chart 1, I10)

46°02'57.0"N 073°07'06.0"W

DFO(6411311-03)

Add depth of 10,4 metres
(See Chart 1, I10)

46°02'59.8"N 073°07'03.9"W

DFO(6411311-04)

Add depth of 10,6 metres
(See Chart 1, I10)

46°02'52.5"N 073°07'06.8"W

DFO(6411311-05)

Add depth of 9 metres
(See Chart 1, I10)

46°02'43.0"N 073°07'12.0"W

DFO(6411311-06)

Delete depth of 8,2 metres
(See Chart 1, I10)

46°02'58.7"N 073°07'00.2"W

DFO(6411311-08)

Add depth of 7,8 metres
(See Chart 1, I10)

46°02'58.9"N 073°07'00.5"W

DFO(6411311-09)

Delete depth of 8,3 metres
(See Chart 1, I10)

46°02'57.7"N 073°07'02.7"W

DFO(6411311-12)

Add depth of 8 metres
(See Chart 1, I10)

46°02'57.8"N 073°07'02.8"W

DFO(6411311-13)

Delete	depth of 8,3 metres (See Chart 1, I10)	46°02'56.2"N 073°07'03.2"W <i>DFO(6411311-14)</i>
Add	depth of 8 metres (See Chart 1, I10)	46°02'56.3"N 073°07'03.3"W <i>DFO(6411311-15)</i>
Delete	depth of 8,6 metres (See Chart 1, I10)	46°02'59.7"N 073°06'57.2"W <i>DFO(6411311-18)</i>
Add	depth of 8,3 metres (See Chart 1, I10)	46°02'59.7"N 073°06'57.2"W <i>DFO(6411311-20)</i>
Delete	depth of 7,9 metres (See Chart 1, I10)	46°02'55.2"N 073°06'52.8"W <i>DFO(6411311-21)</i>
Add	depth of 7,1 metres (See Chart 1, I10)	46°02'55.5"N 073°06'53.3"W <i>DFO(6411311-22)</i>
Delete	depth of 11,6 metres (See Chart 1, I10)	46°02'52.9"N 073°07'14.2"W <i>DFO(6411311-23)</i>
Add	depth of 11,3 metres (See Chart 1, I10)	46°02'52.9"N 073°07'14.3"W <i>DFO(6411311-24)</i>

1350 - Sorel-Tracy - Sheet/Feuille 1 - New Edition - 12-JUN-2020 - NAD 1983
26-SEP-2025

LN/D. 21-FEB-2025

Add	depth of 8 metres (See Chart 1, I10)	46°02'58.4"N 073°07'13.1"W <i>DFO(6411311-01)</i>
Delete	depth of 10,9 metres (See Chart 1, I10)	46°02'57.6"N 073°07'06.6"W <i>DFO(6411311-02)</i>
Add	depth of 10,6 metres (See Chart 1, I10)	46°02'57.0"N 073°07'06.0"W <i>DFO(6411311-03)</i>
Add	depth of 10,4 metres (See Chart 1, I10)	46°02'59.8"N 073°07'03.9"W <i>DFO(6411311-04)</i>
Add	depth of 10,6 metres (See Chart 1, I10)	46°02'52.5"N 073°07'06.8"W <i>DFO(6411311-05)</i>
Add	depth of 9 metres (See Chart 1, I10)	46°02'43.0"N 073°07'12.0"W <i>DFO(6411311-06)</i>

Delete	depth of 8,2 metres (See Chart 1, I10)	46°02'58.7"N 073°07'00.2"W <i>DFO(6411311-08)</i>
Add	depth of 7,8 metres (See Chart 1, I10)	46°02'58.9"N 073°07'00.5"W <i>DFO(6411311-09)</i>
Delete	depth of 8,3 metres (See Chart 1, I10)	46°02'57.7"N 073°07'02.7"W <i>DFO(6411311-12)</i>
Add	depth of 8 metres (See Chart 1, I10)	46°02'57.8"N 073°07'02.8"W <i>DFO(6411311-13)</i>
Delete	depth of 8,3 metres (See Chart 1, I10)	46°02'56.2"N 073°07'03.2"W <i>DFO(6411311-14)</i>
Add	depth of 8 metres (See Chart 1, I10)	46°02'56.3"N 073°07'03.3"W <i>DFO(6411311-15)</i>
Delete	depth of 8,6 metres (See Chart 1, I10)	46°02'59.7"N 073°06'57.2"W <i>DFO(6411311-18)</i>
Add	depth of 8,3 metres (See Chart 1, I10)	46°02'59.7"N 073°06'57.2"W <i>DFO(6411311-20)</i>
Delete	depth of 7,9 metres (See Chart 1, I10)	46°02'55.2"N 073°06'52.8"W <i>DFO(6411311-21)</i>
Add	depth of 7,1 metres (See Chart 1, I10)	46°02'55.5"N 073°06'53.3"W <i>DFO(6411311-22)</i>
Delete	depth of 11,6 metres (See Chart 1, I10)	46°02'52.9"N 073°07'14.2"W <i>DFO(6411311-23)</i>
Add	depth of 11,3 metres (See Chart 1, I10)	46°02'52.9"N 073°07'14.3"W <i>DFO(6411311-24)</i>

1429 - Canal de la Rive Sud - New Chart - 09-APR-2010 - NAD 1983
12-SEP-2025

LNMD. 08-AUG-2025

Delete	rear range/leading light F G 18m12M with leading line on a bearing 247° and a reciprocal bearing 67° (See Chart 1, P20.2)	45°25'59.3"N 073°41'31.1"W <i>(Q2025042) LL(1195) DFO(6411288-01)</i>
Delete	front range/leading light F G 9m12M (See Chart 1, P20.2)	45°25'56.1"N 073°41'41.7"W <i>(Q2025041) LL(1194) DFO(6411288-02)</i>

1430 - Entrée du canal Lachine - New Edition - 23-NOV-2018 - NAD 1983

12-SEP-2025

LNMD. 08-AUG-2025

Delete rear range/leading light F G 18m12M with leading line on a bearing 247° and a reciprocal bearing 67°
(See Chart 1, P20.2) 45°25'59.3"N 073°41'31.1"W
(Q2025042) LL(1195) DFO(6411288-01)

Delete front range/leading light F G 9m
(See Chart 1, P20.2) 45°25'56.1"N 073°41'41.7"W
(Q2025041) LL(1194) DFO(6411288-02)

1430 - Lac Saint-Louis - New Edition - 23-NOV-2018 - NAD 1983

12-SEP-2025

LNMD. 08-AUG-2025

Delete rear range/leading light F G 18m12M with leading line on a bearing 247° and a reciprocal bearing 67°
(See Chart 1, P20.2) 45°25'59.3"N 073°41'31.1"W
(Q2025042) LL(1195) DFO(6411288-01)

Delete front range/leading light F G 9m12M
(See Chart 1, P20.2) 45°25'56.1"N 073°41'41.7"W
(Q2025041) LL(1194) DFO(6411288-02)

1438 - Gananoque - New Edition - 31-AUG-2012 - World Geodetic System 1984

19-SEP-2025

LNMD. 19-NOV-2021

Add depth of 1.8 metres
(See Chart 1, I10)
This notice affects Electronic Navigational Chart: CA573361 44°19'25.4"N 076°09'25.5"W
DFO(6605545-01)

Delete depth of 1.3 metres
(See Chart 1, I10)
This notice affects Electronic Navigational Chart: CA573361 44°19'35.6"N 076°09'36.7"W
DFO(6605545-02)

Add depth of 0.6 metres
(See Chart 1, I10)
This notice affects Electronic Navigational Chart: CA573361 44°19'35.9"N 076°09'36.7"W
DFO(6605545-03)

Delete depth of 2.4 metres
(See Chart 1, I10)
This notice affects Electronic Navigational Chart: CA573361 44°19'32.3"N 076°09'34.2"W
DFO(6605545-04)

Add depth of 1.8 metres
(See Chart 1, I10)
This notice affects Electronic Navigational Chart: CA573361 44°19'32.1"N 076°09'34.4"W
DFO(6605545-05)

Delete depth of 2.6 metres
(See Chart 1, I10)
This notice affects Electronic Navigational Chart: CA573361 44°19'24.6"N 076°09'51.5"W
DFO(6605545-06)

Add depth of 1.5 metres
(See Chart 1, I10)
This notice affects Electronic Navigational Chart: CA573361 44°19'24.6"N 076°09'51.2"W
DFO(6605545-07)

1550 - Britannia Bay - Sheet/Feuille 1 - New Edition - 27-MAY-2011 - NAD 1983

19-SEP-2025

LNMD. 08-AUG-2025

Amend white-orange information spar buoy, marked 2 to read white-orange information lighted spar buoy FI Y, marked 2
(See Chart 1, QI) 45°22'29.0"N 075°48'28.5"W
(B2025025) LL(1297.3) DFO(6605541-01)

Amend white-orange information spar buoy, marked 4 to read white-orange information lighted spar buoy FI Y, marked 4
(See Chart 1, QI) 45°22'38.4"N 075°48'40.1"W
(B2025026) LL(1297.2) DFO(6605542-01)

Add white-orange information lighted spar buoy FI Y, marked 5
(See Chart 1, QI) 45°22'20.4"N 075°48'17.4"W
(B2025027) LL(1297.1) DFO(6605544-01)

2022 - Healey Falls Locks to Rice Lake / Écluses de Healey Falls au Rice Lake - Sheet/Feuille 1 - New Edition - 02-FEB-2007 - NAD 1983

26-SEP-2025

LNMD. 09-OCT-2009

Add obstruction, depth unknown
(See Chart 1, K40) 44°23'06.2"N 077°50'39.8"W
DFO(6605548-01)

2228 - Lake Huron/Lac Huron (Southern Portion/Partie sud) - New Edition - 01-DEC-2021 - World Geodetic System 1984

05-SEP-2025

LNMD. 28-FEB-2025

Reposition red starboard hand lighted spar buoy FI R, marked V4
(See Chart 1, Qb) from 43°14'23.0"N 082°03'04.0"W
This notice affects Electronic Navigational Chart: CA373092 to 43°14'51.8"N 082°03'21.8"W
(B2023037) LL(771) DFO(6605196-01)

2260 - Sarnia to/à Bayfield - Sheet/Feuille 1 - New Edition - 15-APR-2016 - World Geodetic System 1984

05-SEP-2025

LNMD. 28-FEB-2025

Reposition red starboard hand lighted spar buoy FI R, marked V4
(See Chart 1, Qb) from 43°14'23.0"N 082°03'04.0"W
This notice affects Electronic Navigational Chart: CA373092 to 43°14'51.8"N 082°03'21.8"W
(B2023037) LL(771) DFO(6605196-01)

2303 - Jackfish Bay to St. Ignace Island - New Edition - 29-MAY-2015 - US Standard Datum

26-SEP-2025

LNMD. 28-MAY-2021

Reposition green port hand spar buoy, marked J1
(See Chart 1, Qc) from 48°47'12.2"N 087°25'01.5"W
This notice affects Electronic Navigational Chart: CA373066 to 48°47'11.8"N 087°25'03.8"W
(D2025022) DFO(6605543-01)

4013 - Halifax to / à Sydney - New Edition - 06-SEP-2002 - NAD 1983

12-SEP-2025

LNMD. 08-AUG-2025

Delete subsurface Ocean Data Acquisition System (ODAS) with known depth of 54 fathoms
(See Chart 1, L25) 45°08'34.9"N 059°42'56.1"W
DFO(6312049-01)

4045 - Sable Island Bank / Banc de l'Île de Sable to / au St. Pierre Bank / Banc de Saint-Pierre - New Edition - 10-OCT-2003 - NAD 1983

12-SEP-2025

LNM/D. 01-MAR-2024

Delete subsurface Ocean Data Acquisition System (ODAS) with known depth of 99 metres
(See Chart 1, L25) 45°08'34.9"N 059°42'56.1"W
DFO(6312049-01)

Delete subsurface Ocean Data Acquisition System (ODAS) with known depth of 174 metres
(See Chart 1, L25) 45°26'16.9"N 057°49'43.8"W
DFO(6312049-02)

4117 - Saint John Harbour and Approaches / et les approches - New Edition - 29-MAY-2009 - NAD 1983

05-SEP-2025

LNM/D. 15-AUG-2025

Amend 9,5m to read 9,4m
(See Chart 1, I21) 45°14'50.5"N 066°03'02.7"W
DFO(6312048-01)

4832 - Fortune Bay: Southern Portion / Partie Sud - New Chart - 02-OCT-1987 - NAD 1983

19-SEP-2025

LNM/D. 09-MAY-2025

Add subsurface Ocean Data Acquisition System (ODAS) with known depth of 45 metres
(See Chart 1, L25) 47°22'55.0"N 055°38'41.8"W
DFO(6312011-01)

Add subsurface Ocean Data Acquisition System (ODAS) with known depth of 45 metres
(See Chart 1, L25) 47°11'37.4"N 055°35'31.1"W
DFO(6312011-02)

5449 - Hudson Bay Baie d'Hudson, Northern Portion/Partie nord - New Edition - 15-AUG-1986 - Unknown

19-SEP-2025

LNM/D. 30-NOV-2018

Delete depth of 13 fathoms
(See Chart 1, I10)
This notice affects Electronic Navigational Chart: CA172005 63°00'53.8"N 090°35'27.8"W
DFO(6605540-01)

Add obstruction with known depth of 0.5 fathoms, Rep (2025)
(See Chart 1, K41)
This notice affects Electronic Navigational Chart: CA172005 63°01'09.8"N 090°36'24.4"W
DFO(6605540-02)

5533 - Roes Welcome Sound (Chesterfield Inlet to/à Cape Munn) - New Edition - 27-MAY-2005 - Unknown

19-SEP-2025

LNM/D. 02-MAY-2025

Delete depth of 13 fathoms
(See Chart 1, I10)
This notice affects Electronic Navigational Chart: CA172005 63°01'32.0"N 090°35'36.9"W
DFO(6605540-01)

Add obstruction with known depth of 0.5 fathoms, Rep (2025)
(See Chart 1, K41)
This notice affects Electronic Navigational Chart: CA172005 63°01'09.8"N 090°36'24.4"W
DFO(6605540-02)

7621 - Amundsen Gulf - New Edition - 25-FEB-2022 - NAD 1983

12-SEP-2025

LN/D. 30-AUG-2024

Add	obstruction, depth unknown, Rep (2025) (See Chart 1, K40)	69°59'35.3"N 125°17'39.3"W <i>DFO(6605537-01)</i>
Add	obstruction, depth unknown, Rep (2025) (See Chart 1, K40)	69°58'57.3"N 125°15'46.3"W <i>DFO(6605537-02)</i>
Add	obstruction, depth unknown, Rep (2025) (See Chart 1, K40)	69°54'21.9"N 125°13'04.4"W <i>DFO(6605537-03)</i>
Add	obstruction, depth unknown, Rep (2025) (See Chart 1, K40)	69°54'22.4"N 124°59'45.0"W <i>DFO(6605537-04)</i>
Add	obstruction, depth unknown, Rep (2025) (See Chart 1, K40)	69°57'40.3"N 124°59'00.3"W <i>DFO(6605537-05)</i>

7665 - Franklin Bay and/et Darnley Bay - New Chart - 13-JUN-1986 - NAD 1927

12-SEP-2025

LN/D. 30-AUG-2024

Add	obstruction, depth unknown, Rep (2025) (See Chart 1, K40)	69°59'34.3"N 125°17'29.2"W <i>DFO(6605537-01)</i>
Add	obstruction, depth unknown, Rep (2025) (See Chart 1, K40)	69°58'56.5"N 125°15'37.6"W <i>DFO(6605537-02)</i>
Add	obstruction, depth unknown, Rep (2025) (See Chart 1, K40)	69°54'21.1"N 125°12'55.7"W <i>DFO(6605537-03)</i>
Add	obstruction, depth unknown, Rep (2025) (See Chart 1, K40)	69°54'21.4"N 124°59'36.5"W <i>DFO(6605537-04)</i>
Add	obstruction, depth unknown, Rep (2025) (See Chart 1, K40)	69°57'39.4"N 124°58'49.6"W <i>DFO(6605537-05)</i>

Section 3: Radio Aids to Marine Navigation Corrections

*905/25 Radio Aids to Marine Navigation 2025 (Atlantic, St. Lawrence, Great Lakes, Lake Winnipeg, Arctic and Pacific)

Page 2-16

AMEND AS FOLLOWS:

2.1.4 Les Escoumins, Québec

Les Escoumins MCTS Centre VHF Direction Finding Advisory Service

A VHF/DF advisory service is available to vessels in difficulty within range of the receiver sites located at Rivière-au-Renard, Cap-aux-Meules, Havre St-Pierre, Natashquan, Newport, ~~Pointe-Heath~~, **Anticosti**, Mont-Louis, Lac Daigle (Sept-Îles) and Grosses-Roches. Information concerning position, bearing and distance may be provided for use at the discretion of the user.

Page 2-16

AMEND AS FOLLOWS:

Table 2-7 - Les Escoumins MCTS/VCF - Ship/Shore Communications

Sites located at	Channels	Frequencies		Remarks
		Transmit	Receive	
...
Carleton 48°08'28"N 066°06'32"W	Ch16 Ch70 Ch85	-	-	Ch85: Facilities are available for connecting ships directly to the commercial telephone system on shore.
Newport 48°13'24"N 064°47'33"W	Ch16 Ch70 Ch84	-	-	VHF Direction Finding service is available. Ch84: Facilities are available for connecting ships directly to the commercial telephone system on shore.
Pointe-Heath 49°05'05"N 061°42'09"W Anticosti 49°12'00"N 061°45'15"W	Ch16 Ch70 Ch84	-	-	VHF Direction Finding service is available. Ch84: Facilities are available for connecting ships directly to the commercial telephone system on shore.
Mont-Louis 49°12'48"N 065°46'25"W	Ch14 Ch16 Ch26 Ch70	-	-	VHF Direction Finding service is available. Ch26: Facilities are available for connecting ships directly to the commercial telephone system on shore.
...

Page 2-19

AMEND AS FOLLOWS:

Table 2-8 - Les Escoumins MCTS/VCF - Broadcasts

Time UTC	Site	Frequency or Channel	Contents
...
Continuous	Forillon Carleton Natashquan Cap-aux-Meules	Ch21B (2021)	Radiotelephony (French followed by English) <ul style="list-style-type: none"> Weather for marine forecast areas 215, 216, 217, 218, 219, 220, 221, 301 and 302. Navigational warnings for the Gulf of St. Lawrence including the Magdalene Islands, the coast between Sept-Îles and Blanc Sablon, the southern shore of 66W eastward including the Baie des Chaleurs up to Miramichi beach. Ice Reports. Notices to Fish Harvesters (when available). Navigational warnings revising the position of every reported offshore exploration and exploitation vessel. Wave height forecast for marine forecast areas 215, 217, 219, 220, 221, 301 and 302.
	Pointe-Heath Anticosti Harrington Harbour	Ch25B (2025)	
	Newport Havre St-Pierre La Romaine	Ch83B (2083)	
Continuous	Lac Daigle Grosses-Roches Cap à l'Est	Ch21B (2021)	Radiotelephony (French followed by English) <ul style="list-style-type: none"> Weather for marine forecast areas 301, 302, 303, 304, 305 and 313. Navigational warnings for the Saguenay River and the St. Lawrence River from Île Blanche to a line from Mingan to Cap Gaspé including Port Menier and the western point of Anticosti Island. Ice information for the Saguenay River and the St. Lawrence River from Île Blanche to Cabot and Belle-Isle straits (when available). Notices to Fish Harvesters (when available).
	Mont-Louis Mont-Joli Sacré-Cœur	Ch83B (2083)	

Page 5-39

DELETE AS FOLLOWS:

Table 5-45 - Maritimes Region: Marine Weather Observations

Area Name	Area Name	Area Name	Area Name
Baccaro Point	Fundy Park	Lunenburg	Sable Island
Bas Caraquet	Gaspé Airport	Miscou Island	Sept-Îles Airport
Beaver Island	Grand Étang	Natashquan	St. Paul Island
Brier Island	Grand Manan	New Carlisle	Summerside
Bouctouche	Hart Island	North Cape	Sydney Airport
Cap Chat	Havre-Saint-Pierre Airport	Parrsboro	Tracadie
Cap d'Espoir	Heath Point (Anticosti)	Pointe-des-Monts	Western Head
Caribou Point	Îles aux Perroquets	Point Lepreau	Wreckhouse
Charlo	Îles-de-la-Madeleine Airport	Port aux Basques	Yarmouth Airport
East Point	Ingonish Beach	Port Menier (Anticosti)	-
Eskasoni	Kouchibouguac	Rivière-la-Madeleine	-

Section 4: Canadian Sailing Directions Corrections

The following **Canadian Sailing Directions** volumes have recently been updated on the [Canadian Hydrographic Service website](#).

No.	Title
Atlantic Coast	
ATL 108	Gulf of St. Lawrence (Southwest Portion)
Central Canada	
CEN 308	Rideau Canal and Ottawa River

Each volume includes a section entitled “Record of Changes” which lists all updates that are incorporated during the current calendar year.

Section 5: List of Lights, Buoys and Fog Signals Corrections

The amendments are highlighted and deletions are crossed out. For general and region-specific information on the List of Lights, click on the following links: [Newfoundland and Labrador Coast](#), [Atlantic Coast](#), [Inland Waters](#) and [Pacific Coast](#).

No.	Name	Position ----- Latitude N. Longitude W.	Light Characteristics	Focal Height in m. above water	Nomi- nal Range	Description ----- Height in meters above ground	Remarks ----- Fog Signals
-----	------	--	--------------------------	--	-----------------------	--	---------------------------------

NEWFOUNDLAND AND LABRADOR COAST

NOTRE DAME BAY (LL 326 – 395)

362.5 H0635	Bacalhao Island Sector Light	49 41 14.5 054 33 17.1	F Al	R W G	71.0	23	Square skeleton tower, red rectangular daymark with white vertical stripe. 3.6	Visible through an arc of 5°. Red from 301° to 300.5°; Al RW from 300.5° to 299.5°; white from 299.5° to 297.5°; Al GW from 297.5° to 296.5°; green from 296.5° to 296°. Charted sectors extend 3.3NM from light. The operation of the light will be made remotely on channel 65A (156.275 MHz). Mariners requiring the operation of the light will have to key the microphone of the VHF radio 3 consecutive times within 5 seconds on channel 65A (156.275 MHz) to turn the light on. The light automatically shuts off after 1 hour or manually by keying the microphone of the VHF radio 5 times within 5 seconds. Operates 24 h. Year round.
Chart:4862 Edn 09/25 (N25-035)									

TRINITY BAY (LL 450.1 – 471.51)

463 H0522	Flat Rock Fog Signal Station	On building. 48 20 58.0 053 12 27.0	Year round. Horn - Blast 4 s; sil. 56 s. Horn points 129°. Chart:4853 Edn 09/25 (N25-033, 034)
---------------------	---------------------------------	---	-------	-------	-------	-------	-------	-------	---

ATLANTIC COAST

BAY OF FUNDY, N.B. – WEST (LL 5.8 – 114)

92.1	Chance Harbour light buoy KS1	45 07 07.3 066 20 36.9	Fl	G	4s	Green spar, marked "KS1". Year round.	Chart:4116 Edn 09/25 (F25-012)
------	----------------------------------	---------------------------	-----------	----------	-----------	-------	-------	---------------------------------------	-----------------------------------

NOVA SCOTIA, SOUTHEAST COAST (LL 327 – 684.02)

490	Dover Castle light and whistle buoy AT	S. of Dover Island. 44 26 42.5 063 53 33.5	Mo(A)	W	6s	Red and white vertical stripes, marked "AT". Year round.	Chart:4386 Edn 09/25 (F25-013)
-----	--	---	-------	---	----	-------	-------	--	-----------------------------------

Notices to Mariners – Monthly Eastern Edition
Section 5: List of Lights, Buoys and Fog Signals Corrections

No.	Name	Position ----- Latitude N. Longitude W.	Light Characteristics	Focal Height in m. above water	Nomi- nal Range	Description ----- Height in meters above ground	Remarks ----- Fog Signals
-----	------	--	--------------------------	--	-----------------------	--	---------------------------------

CAPE BRETON ISLAND, N.S. (LL 704.85 – 882.5)

860.5 Pleasant Bay light
and bell buoy VC

Delete from list.

Chart:4464
Edn 09/25 (G25-106)

PRINCE EDWARD ISLAND (LL 942 – 1084.7)

1007 St. Peters Island
H0996

Delete from list.

Chart:4466
Edn 09/25 (G25-109)

NORTHUMBERLAND STRAIT – WEST (LL 1085 – 1165.9)

1157	Kouchibouguac Gully light buoy XY2	46 49 53.9 064 53 44.0	Fl	R	4s	Red spar, marked "XY2".	Buoy may be repositioned due to shifting channel. Seasonal.
Chart:4906 Edn 09/25 (G25-111)									
1157.33	Kouchibouguac light buoy XY4	46 49 51.3 064 54 06.6	Fl	R	4s	Red, marked "XY4".	Buoy may be repositioned due to shifting channel. Seasonal.
Chart:4906 Edn 09/25 (G25-112)									
1158.5	Kouchibouguac Gully light buoy XY9	46 49 49.8 064 54 05.6	Fl	G	4s	Green, marked "XY9".	Buoy may be repositioned due to shifting channel. Seasonal.
Chart:4906 Edn 09/25 (G25-113)									
1158.6	Kouchibouguac Gully light buoy XY17	46 50 00.8 064 54 42.9	Fl	G	4s	Green, marked "XY17".	Buoy may be repositioned due to shifting channel. Seasonal.
Chart:4906 Edn 09/25 (G25-114)									
1159	Kouchibouguac Gully Inner light buoy XY21	46 50 13.8 064 54 44.7	Q	G	1s	Green, marked "XY21".	Buoy may be repositioned due to shifting channel. Seasonal.
Chart:4906 Edn 09/25 (G25-115)									

INLAND WATERS

LAKE ONTARIO (LL 403.4 – 551)

459	Telegraph Island								Delete from list.
Chart:2069 Edn 09/25 (B25-031)									
538.2	Grimsby Small Arms Range Cautionary light buoy WY	43 15 07.8 079 36 08.2	Fl	Y	4s	Yellow, marked "WY".	Maintained by DND. Seasonal.
Chart:2077 Edn 09/25 (B25-029)									

Notices to Mariners – Monthly Eastern Edition
Section 5: List of Lights, Buoys and Fog Signals Corrections

No.	Name	Position ----- Latitude N. Longitude W.	Light Characteristics	Focal Height in m. above water	Nomi- nal Range	Description ----- Height in meters above ground	Remarks ----- Fog Signals
-----	------	--	--------------------------	--	-----------------------	--	---------------------------------

538.3	Grimsby Small Arms Range Cautionary light buoy WT	43 14 51.1 079 35 16.1	Fl Y 4s	Yellow, marked "WT".	Maintained by DND. Seasonal.
							Chart:2077 Edn 09/25 (B25-030)

LAC SAINT-LOUIS – SECONDARY CHANNELS (LL 1193 – 1226.95)

1194	Lachine range						Delete from list.
1195							Delete from list.
							Chart:1430 Edn 09/25 (Q25-041, 042)